



COMPANY PROFILE





CONTENT

01

About Us

02

VALUES

03

Our GOALS

04

Our Team

05

strategy

06

PROJECTS
FINISHED

07

PROJECTS
IN HAND

08

Experience

ABOUT US



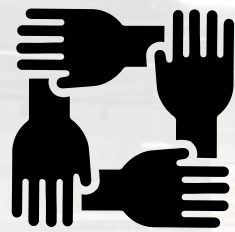
Systematic Construction Company has been providing quality construction services since 2008. We are a full-service construction company that specializes in administrative, commercial, residential projects, infrastructure projects, and large-scale construction projects.



Our team of experienced professionals is dedicated to providing our clients with the highest level of service and quality workmanship.



VALUES



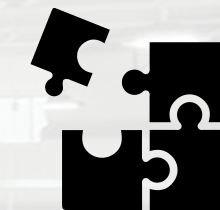
Systematic Construction Company is built on personal and professional integrity. The company believes in doing what it says it will do and strives to achieve results that exceed its clients' expectations..



Systematic Construction Company is constantly focused on safety. The company believes that safety is a top priority and works hard to ensure that its projects are safe for everyone involved.



Systematic Construction Company strives to do the right thing in the right way. The company is committed to delivering projects that are of the highest quality and meet its clients' needs.



Systematic Construction Company contributes to the development of the places it calls home. The company is committed to making a difference in the communities it serves.

GOALS AND OBJECTIVES

- Systematic Construction Company could set an objective to hire skilled employees who have already been working on similar projects and know how to ensure quality results. The company could also provide sufficient training to its employees so that they can learn all the details they might have skipped during their past projects. Additionally, the company could evaluate communication and teamwork from within to maintain a strong team and reach success in construction.
- Systematic Construction Company could set a goal to innovate and adopt new technologies in methods and materials to enhance productivity and cost-effectiveness. The company could also strive to improve the competence of its team by employing diverse, innovative, and results-oriented personnel motivated to deliver excellence.



OUR TEAM



A company's team is the backbone of its success. Hardworking and smart team is essential for achieving the company's goals and objectives. The team is one that puts in long hours and high amounts of physical and emotional effort to achieve the best possible outcomes. On the other hand, a smart team is one that uses its resources and tools to achieve the best potential outcomes within the allotted time and apply its knowledge and expertise in its field to meet a goal while using minimal energy.



Ahmed Abdullatif
Co. Founder

- Two Close Friends With A Shared Passion For Construction, Embarked On A Remarkable Journey Together By Founding Their Construction Company In 2008. Their Partnership Was Built On A Strong Foundation Of Trust And Complementary Skills, Making Them A Formidable Team In The Industry.



Mahmoud Sayed
Co. Founder

- From the very beginning, Ahmed and Mahmoud's vision was clear: to create a construction company that would set new standards for excellence, quality, and innovation in the field. They believed that their combined expertise, knowledge, and dedication could lead them to success, and they were not wrong.



Technical Office Team

The technical office team brings innovation and expertise to the forefront of our projects. Their commitment to excellence is evident in the advanced solutions and cutting-edge technologies they integrate into our designs. This team ensures that our projects not only meet but exceed industry standards.



Project Management Team

Our project management team is the driving force behind turning concepts into reality. They excel in project management, coordinating various aspects of the project life cycle. From inception to completion, they ensure that projects are executed efficiently, on time, and within budget.



Financial Team

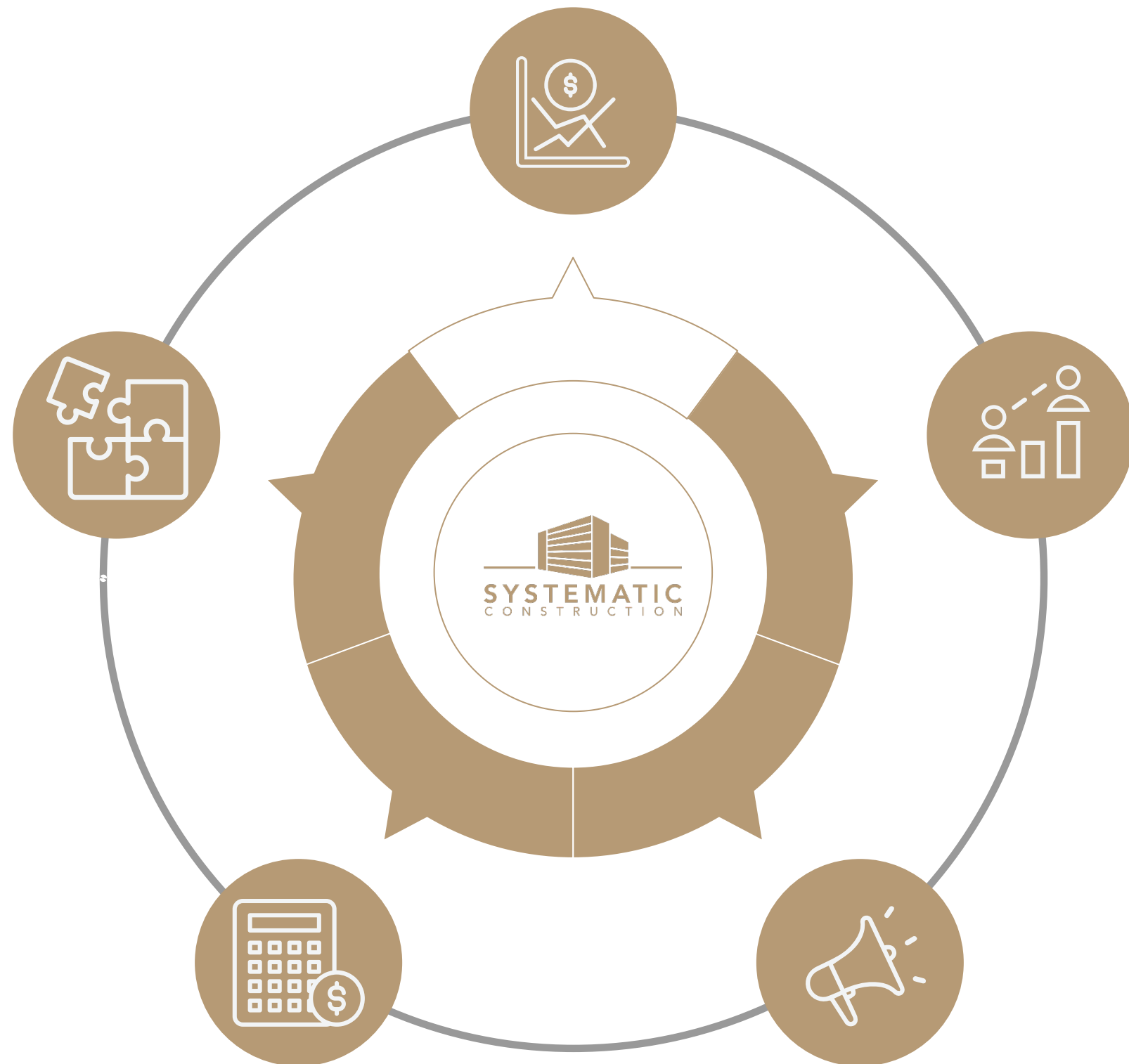
Our financial team is the backbone of our operations, ensuring that every project is financially sound and strategically planned. Through meticulous budgeting, financial analysis, and strategic decision-making, they contribute to the overall financial health and success of our endeavors.



Site Supervision Team

The site supervisors is our on-the-ground force, overseeing the day-to-day operations at project sites. Their attention to detail, commitment to safety, and effective communication are instrumental in maintaining the highest construction standards. They play a vital role in turning plans into tangible structures.

STRATEGIES



01

Planning

A strategic plan can help us define our company's goals and what actions we will take to achieve company's vision and mission statements, long-term goals, yearly objectives, and an action plan of the steps we're going to take to move in the right direction.

02

Competitive

Analyzing our competition can help us identify their strengths and weaknesses, which can help us develop strategies to differentiate yourself from them.

03

Analysis

Analysis is important to track the progress of the project and ensure that it is on schedule and within budget.

04

Execution

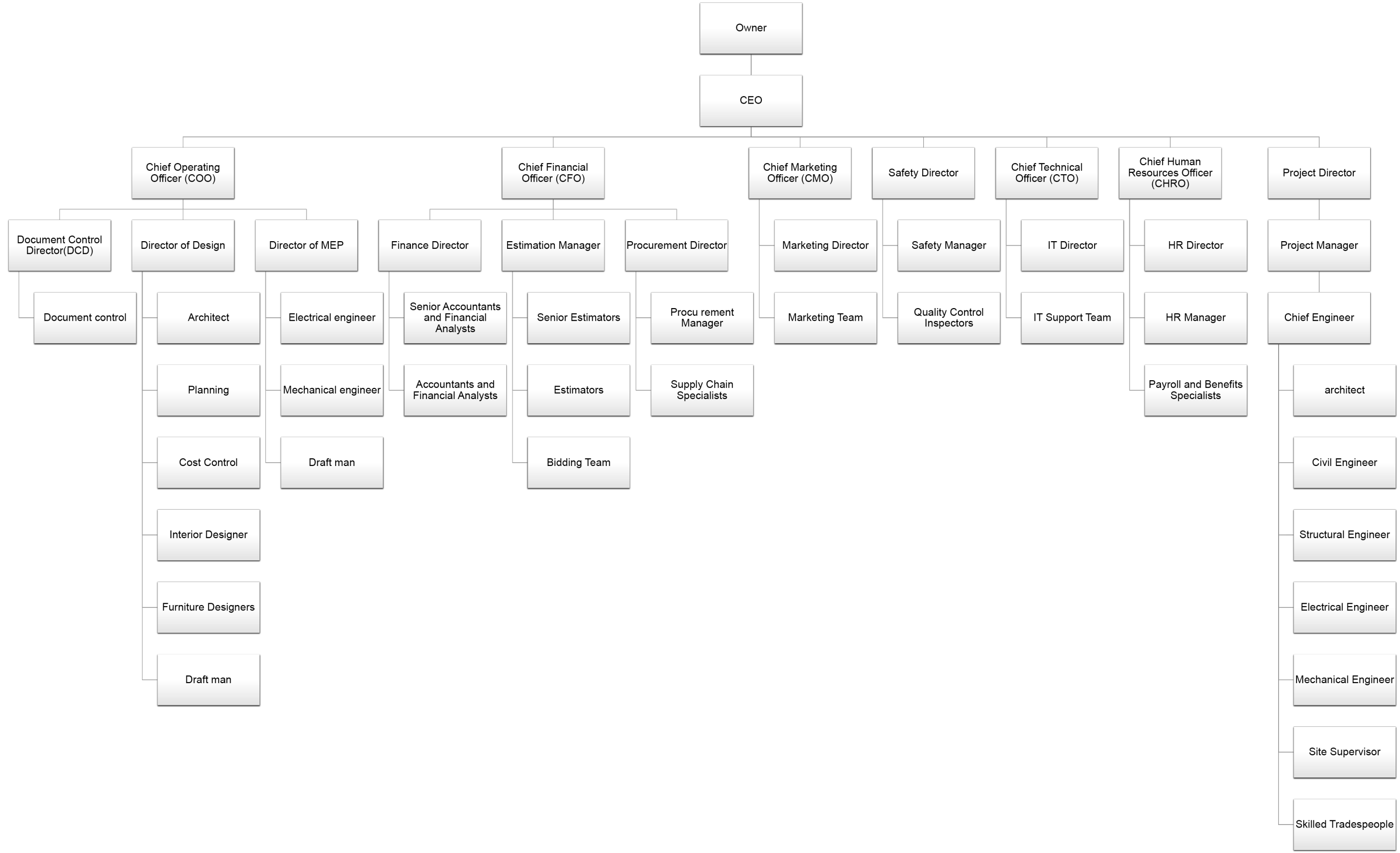
Execution planning is essential for setting expectations for those tasked with executing the strategy.

05

Growth

We are now implementing new technologies to improve our productivity and efficiency. Some of the most commonly used technologies include Building Information Modeling (BIM), drones, and virtual reality .

HIERARCHY



Our Projects

Time Is One That Values Efficiency And Productivity, So Our Team Understands The Importance Of Meeting Deadlines And Delivering Quality Work Within The Allotted Time.



A Smart Team Is One That Uses Its Resources And Tools To Achieve The Best Potential Outcomes Within The Allotted Time. Brainstorming Meetings Are An Excellent Way To Encourage Smart Thinking Within A Team.

Customer Satisfaction Is A Measure Of How Happy Customers Are With A Company's Products, Services, And Overall Customer Experience . It Is An Important Metric For Businesses As It Can Lead To Greater Customer Retention, Higher Lifetime Value, And A Stronger Brand Reputation





- Project Name: Doha Palace
- Location: Qatar, Doha
- The Doha Palace project stands as a testament to the fusion of architectural prowess and cultural heritage, nestled in the vibrant cityscape of Qatar.
- Designed with meticulous attention to detail and an unwavering commitment to authenticity, the reception and suite areas exude the timeless elegance of Arabic style.
- Collaborating with a team of exceptionally skilled architects, the project not only captures the essence of traditional Qatari architecture but also elevates it to a new level of sophistication.
- Every facet of the design, from the intricate patterns adorning the walls to the opulent furnishings, reflects a harmonious blend of modern luxury and ancient tradition.
- The reception area serves as a grand gateway to the Palace, welcoming guests with its majestic arches, ornate calligraphy, and soothing color palette inspired by the desert landscape.
- Here, every detail is carefully curated to evoke a sense of hospitality and refinement, setting the tone for the unparalleled experience that awaits within.





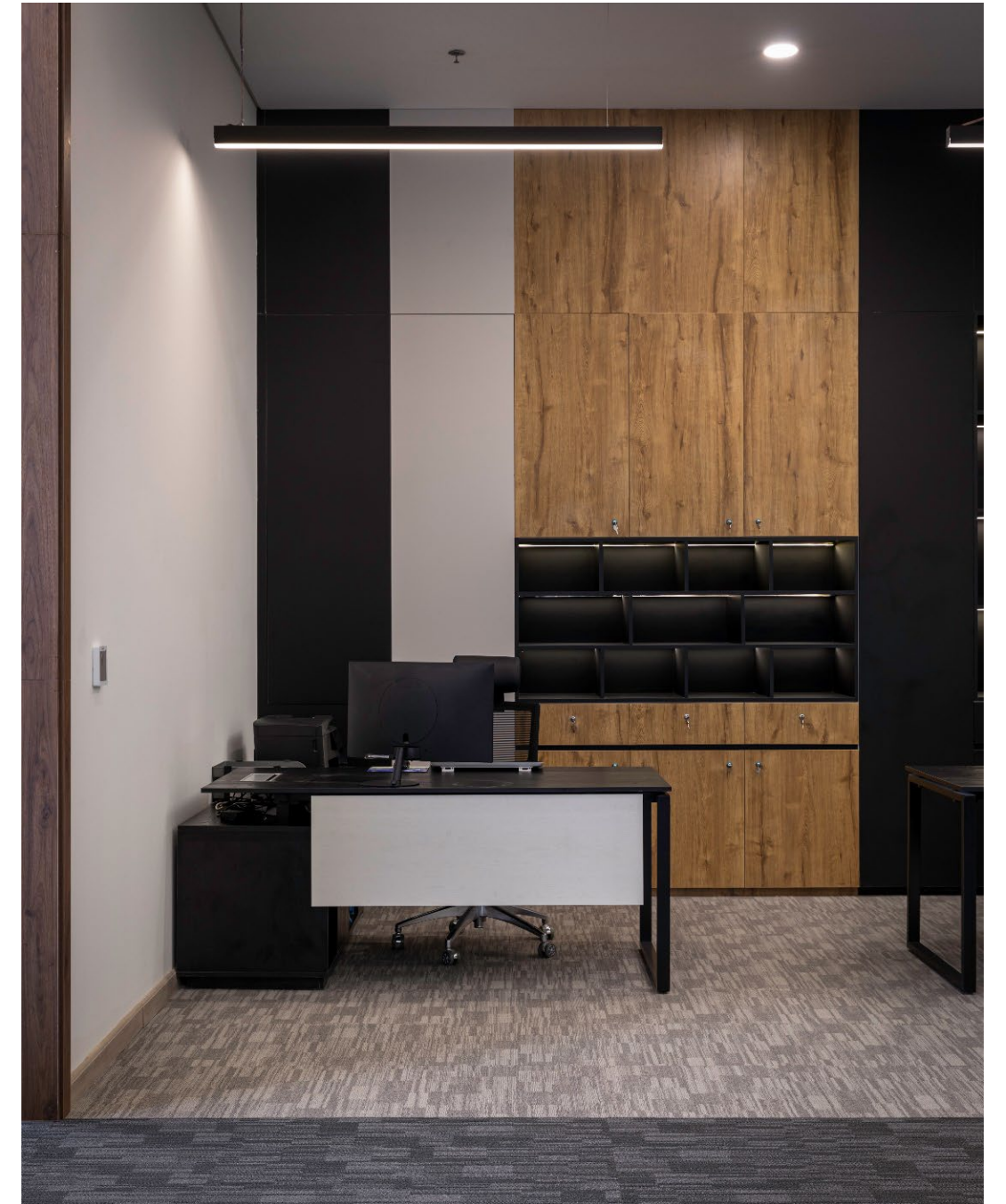
DOHA PALACE





- Project Name: Samsung C&T
- Location: AIN SOKHNA ROAD, MARAKEZ
- Objectives: Samsung C&T, located in Marakez, stands as a dedicated Construction & Trading Corporation center, covering an area of 220 sqm. Our primary objective is to create a dynamic and efficient workspace that aligns with the high standards of Samsung's global reputation.
- Reception Area: A welcoming space to greet visitors and clients.
- Work Space: A functional area designed to optimize productivity and collaboration.
- Manager Room: A private space for managerial tasks and decision-making.
- Meeting Room: Equipped for effective discussions and presentations.
- Bathrooms: Well-appointed facilities for the convenience of staff and guests.
- Kitchen: Providing a comfortable space for breaks and meals.
- IT Room: Supporting the technological infrastructure of the center.
- Storage: An organized space to manage and store essential materials.

SAMSUNG



SAMSUNG

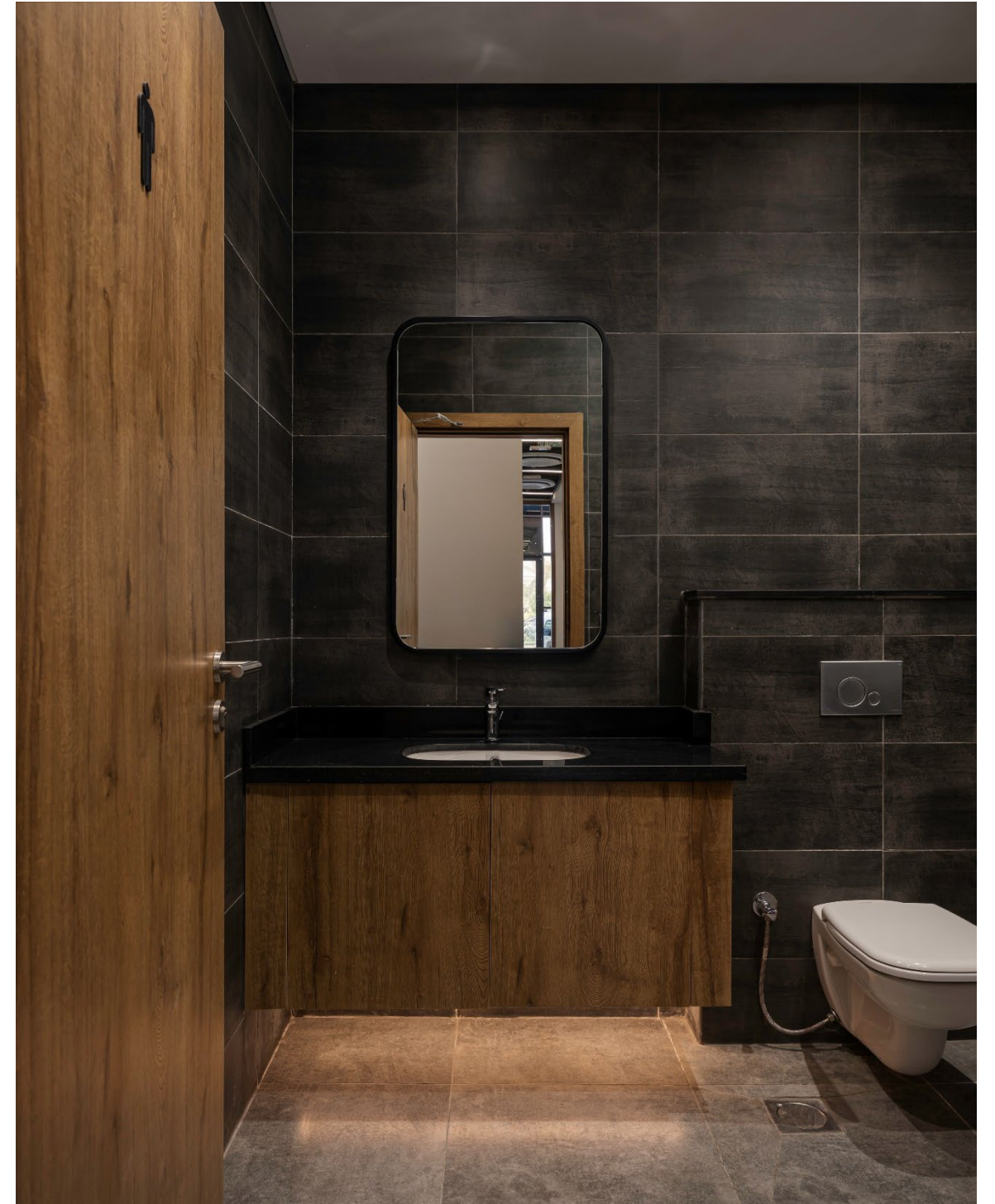
SYSTEMATIC
CONSTRUCTION



SAMSUNG



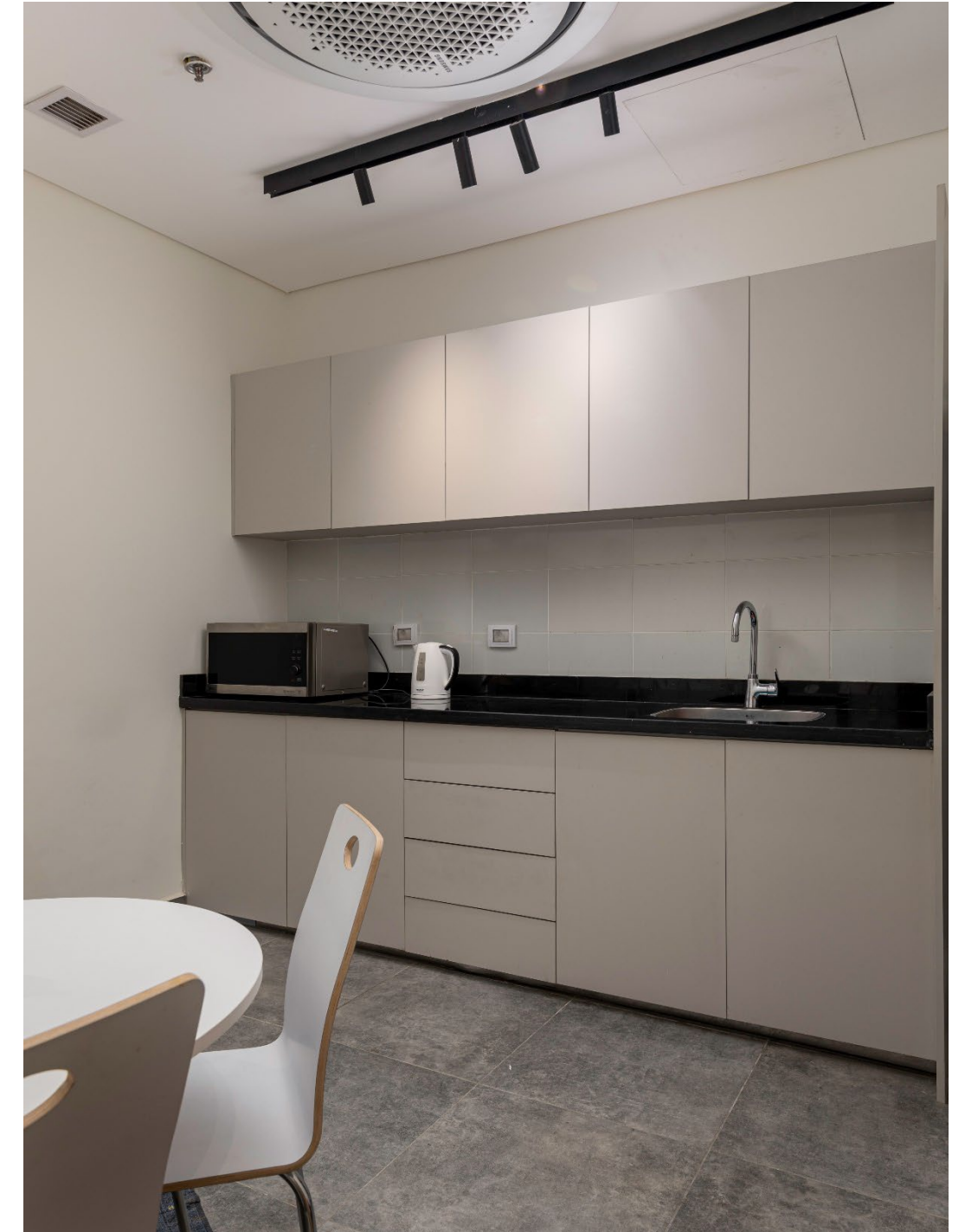
SAMSUNG



SAMSUNG



SAMSUNG



SAMSUNG



SAMSUNG





- Project Name: Mountain View Villa
- Location: 5th settlement
- the Villa in Mountain View Compound project emerges as an epitome of contemporary luxury, meticulously crafted with the collaboration of exceptionally talented architects. This exceptional residence redefines modern living with its innovative design, seamlessly integrating sleek aesthetics and functionality.
- Inspired by the dynamic interplay of form and function, the architects conceptualized a villa exuding refined modernity and sophistication. Clean lines, geometric shapes, and expansive glass elements converge, creating an architectural marvel that harmonizes effortlessly with its natural surroundings.







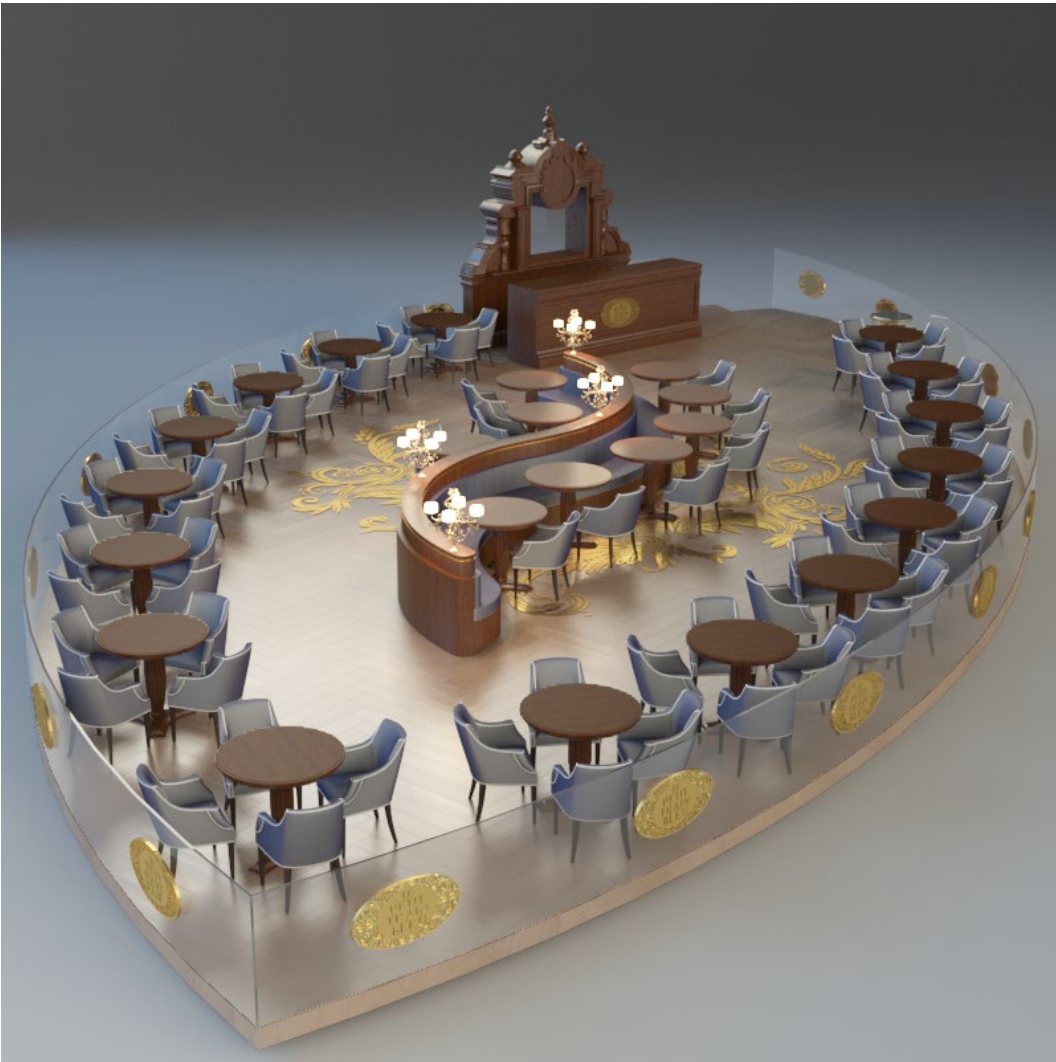






- Project Name: The Le Train Bleu
- Location: Qatar
- The Le Train Bleu project brings a touch of French elegance and sophistication to the bustling shopping scene of Qatar, nestled within the vibrant ambiance of a prestigious mall. Collaborating with a team of exceptionally talented architects, the design of this boutique echoes the timeless allure of French style while infusing it with a contemporary flair.
- From the moment visitors step inside, they are transported to a realm of Parisian charm and refinement. The architecture exudes a sense of grandeur, with ornate facades, intricate moldings, and elegant arches reminiscent of iconic French landmarks. Every detail, from the polished marble floors to the gilded accents, reflects a meticulous attention to authenticity and craftsmanship.
- The interior design of Le Train Bleu is a celebration of French artistry and savoir-faire. Luxurious fabrics, antique furnishings, and delicate chandeliers evoke the ambiance of a chic Parisian salon, inviting shoppers to indulge in a world of refined luxury and impeccable taste.

Le train bleu





- Project Name: Beach villa
- Location: North coast
- Nestled along the picturesque shores of the North Coast, the Villa on Beach project emerges as a contemporary masterpiece, meticulously crafted in collaboration with exceptionally talented architects. This stunning residence redefines coastal living with its modern design and seamless integration with its natural surroundings.
- Inspired by the breathtaking beauty of the coastline, the architects have conceived a villa that blends effortlessly into its beachfront setting. Clean lines, expansive glass panels, and sleek geometric forms create an aesthetic that is both striking and harmonious, reflecting the allure of contemporary design.

Beach Villa



Beach Villa



Beach Villa







- Project Name: Cava Cafe
- Location: Alexandria
- The Cava Cafe & Restaurant project in Alexandria emerges as a captivating fusion of industrial chic and culinary excellence, envisioned through a collaboration with exceptionally talented architects. Situated amidst the rich tapestry of Alexandria's urban landscape, this establishment redefines the dining experience with its bold design and innovative concept.
- Drawing inspiration from the city's industrial heritage, the architects have crafted a space that marries raw aesthetics with refined functionality. Exposed brick walls, weathered steel accents, and sleek concrete finishes create an ambiance that is at once rugged and inviting, paying homage to the storied past of Alexandria's industrial landscape.
- As guests step into Cava Cafe & Restaurant, they are greeted by an atmosphere that is both modern and nostalgic. The spacious interiors are bathed in natural light, courtesy of expansive windows that offer glimpses of the bustling cityscape outside. Industrial-style lighting fixtures hang from exposed beams, casting a warm glow over the eclectic mix of furnishings and decor







- Project Name: Mazaya Bridal Shop
- Location: Morocco
- In Morocco, the Mazaya Bridal Shop project epitomizes modern style and sophistication, meticulously crafted in collaboration with exceptionally talented architects. This boutique, nestled amidst the vibrant streets of Morocco, redefines the bridal shopping experience with its contemporary design and curated selection of couture.
- Inspired by the timeless allure of modern aesthetics, the architects have conceived a space exuding refinement and allure. Clean lines, minimalist decor, and a neutral color palette create an ambiance that is both sleek and inviting, allowing the exquisite bridal gowns to take center stage.
- Upon entering Mazaya Bridal Shop, visitors are enveloped in an atmosphere of luxury and serenity. Flooded with natural light, the spacious interiors accentuate the beauty of the carefully curated collection of bridal attire. Modern furnishings and understated accents provide a backdrop that is both chic and timeless, inviting brides-to-be to envision themselves in their dream gown.





- Project Name: Palm villa
- Location: Sheikh zayed
- The interior design reflects a commitment to modern luxury and comfort. High-end materials, minimalist decor, and innovative furnishings create an ambiance that is stylish and inviting, offering residents a sanctuary of unparalleled beauty and sophistication.
- Beyond serving as a private residence, the Villa offers residents a lifestyle of unparalleled luxury and convenience. Expansive terraces, a sparkling infinity pool, and lush landscaping provide the perfect backdrop for outdoor entertaining and relaxation, while state-of-the-art amenities cater to every imaginable need.











Palm Villa

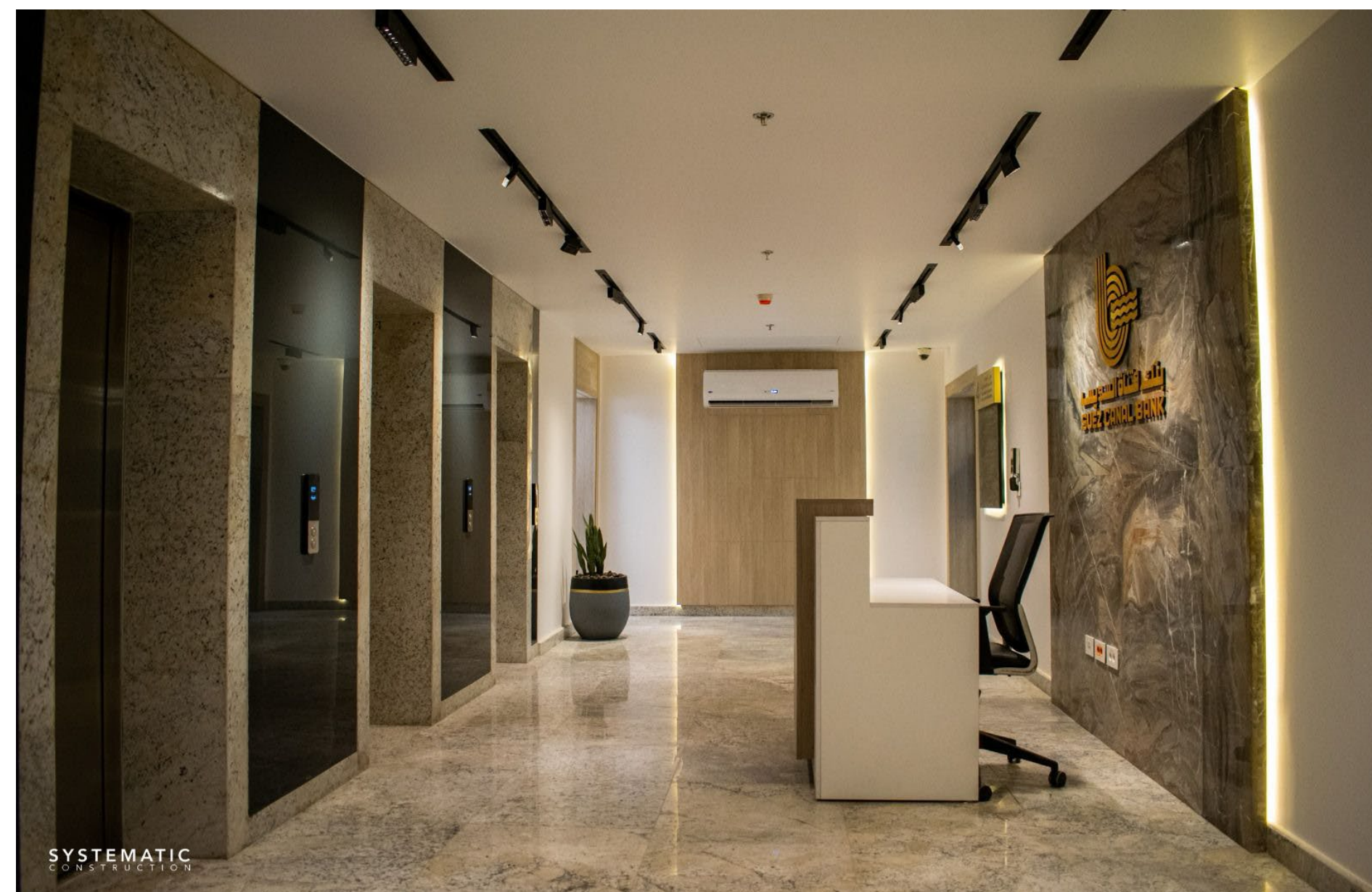




- Project Name: Bathroom Bauhaus style
- Location: Qatar, Doha
- Step into a Bauhaus-inspired bathroom where form follows function, and every element serves a purpose, creating a space that's sleek, efficient, and effortlessly stylish.
- In a Bauhaus bathroom, simplicity is elevated to an art form, with clean lines, geometric shapes, and a minimalist aesthetic that exudes timeless sophistication.
- Embrace the Bauhaus ethos in your bathroom design, where modernism meets practicality, and innovative ideas flourish in a space that's both functional and beautiful.
- Create a Bauhaus sanctuary in your bathroom, where design meets functionality in perfect harmony, and every detail is carefully considered for its contribution to the overall aesthetic.
- In a Bauhaus-style bathroom, every element is meticulously crafted, from the sleek fixtures to the seamless integration of form and function, resulting in a space that's both elegant and efficient.



- Project Name: Suez Canal Bank
- Location: Garden City
- Objectives: The Suez Canal Bank project in Garden City serves as a dedicated banking institution. Spanning 4,600 sqm, the facility comprises 5 levels, each designed to support the operational needs and services of the bank.
- Quality Assurance: Suez Canal Bank stands as a testament to our unwavering commitment to quality. It is designed to meet the demands of the banking sector and offer customers a secure and efficient space for their financial needs.













- Project Name: One Health
- Location: Tanta
- Objectives: One Health in Tanta, covering 900 sqm, offers medical insurance coverage and a wide range of essential healthcare services, including labs, nurse assessment, x-ray room, dental clinics, and more. Our goal is to make quality healthcare accessible to the community.
- Quality Assurance: Every element of our facility, from the architecture to the interior design, is a testament to our commitment to providing the community with not only top-tier healthcare services but also a physically inviting and quality-controlled environment.

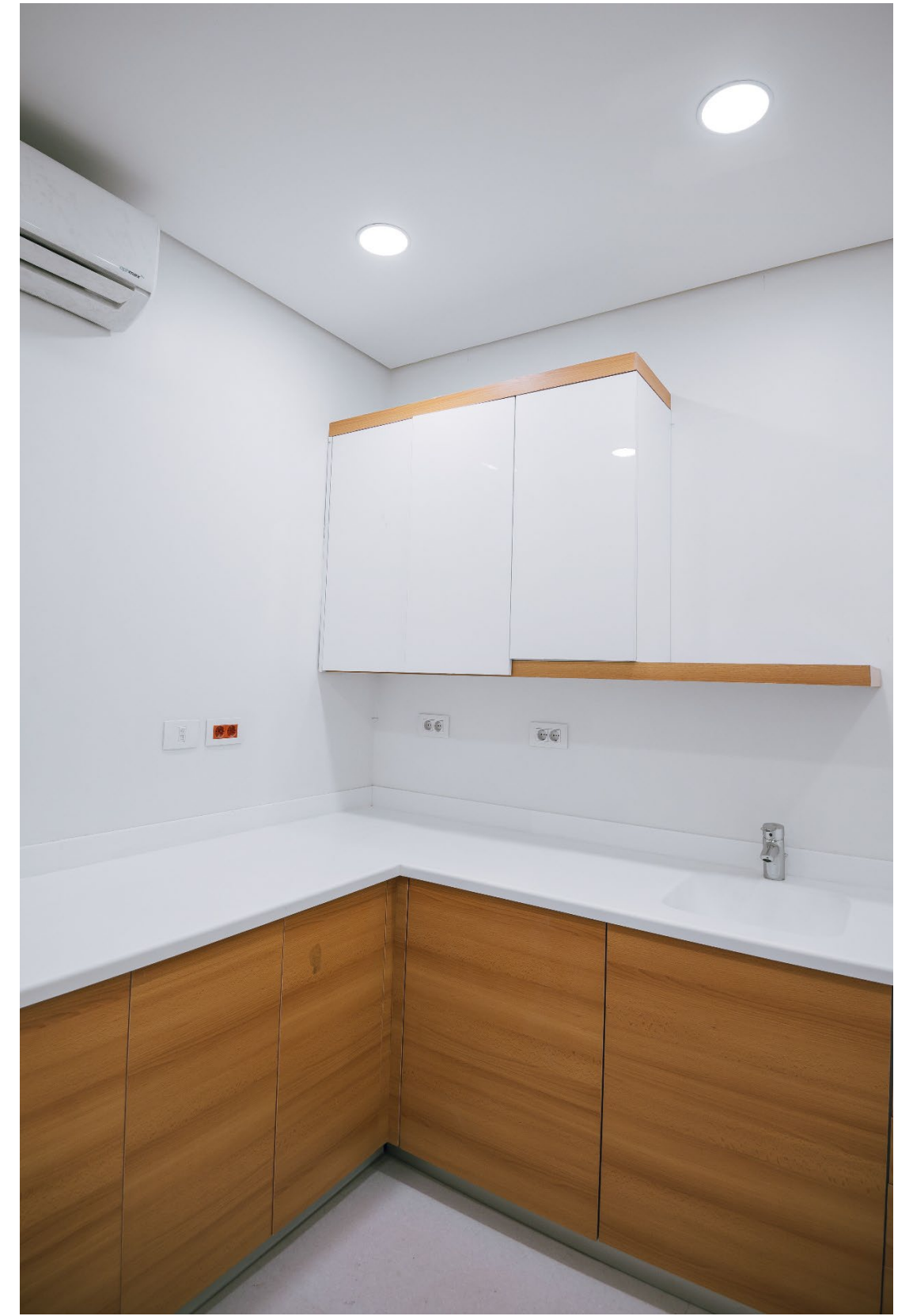




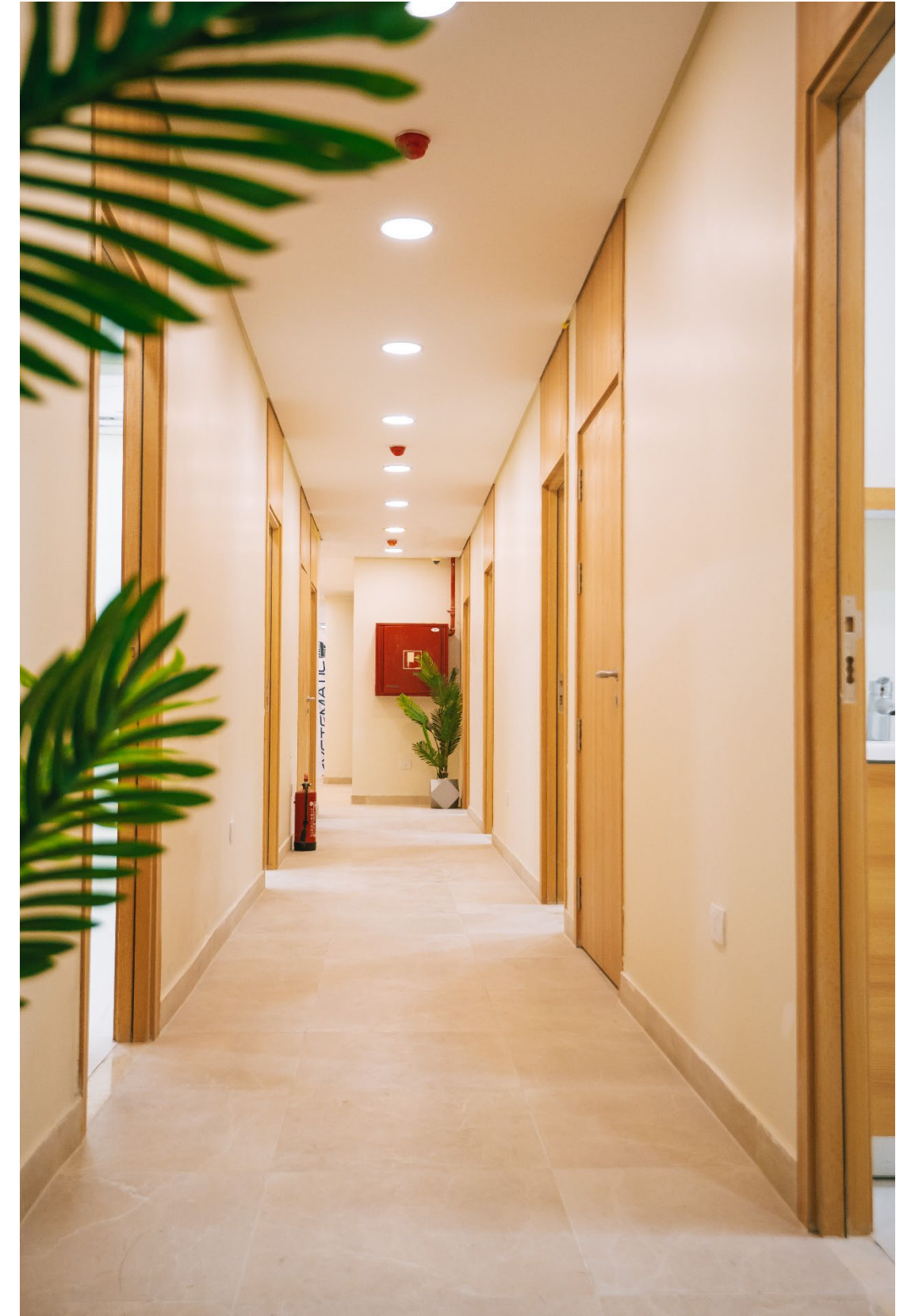


- Project Name: One Health
- Location: Alexandria
- Objectives: One Health in Alexandria is a 1200 sqm facility that we meticulously constructed to house essential medical services. Our goals include providing a comprehensive range of services, such as labs, nurse assessment, handicapped toilets, sampling room, physio consultation rooms, x-ray room, control rooms, dental clinics, dental panorama, physiotherapy for male and female separated, gynecologists' clinic, ultra sound room, consultation rooms, urgent rooms, nurse station, a lot of waiting area, and bathrooms. We are dedicated to delivering quality care and ensuring accessibility for our community.
- Quality Assurance: Our construction and fit-out quality assurance program is a testament to our dedication to excellence. We adhere to stringent construction standards, use the finest materials, and employ experienced professionals to bring our vision to life. From the foundation to the finishing touches, we prioritize safety, durability, and aesthetics.











- Project Name: One Health
- Location: Assiut
- Objectives: One Health in Assiut is a dedicated healthcare facility spanning 700 sqm with a primary focus on providing medical insurance coverage. Our mission is to make quality healthcare accessible to the community.
- Quality Assurance: We adhere to strict construction protocols, employ experienced professionals, and use premium materials to ensure a robust and durable infrastructure. The interior fit-out is carefully planned, ensuring not only functionality but also a welcoming and comfortable environment for both patients and staff.



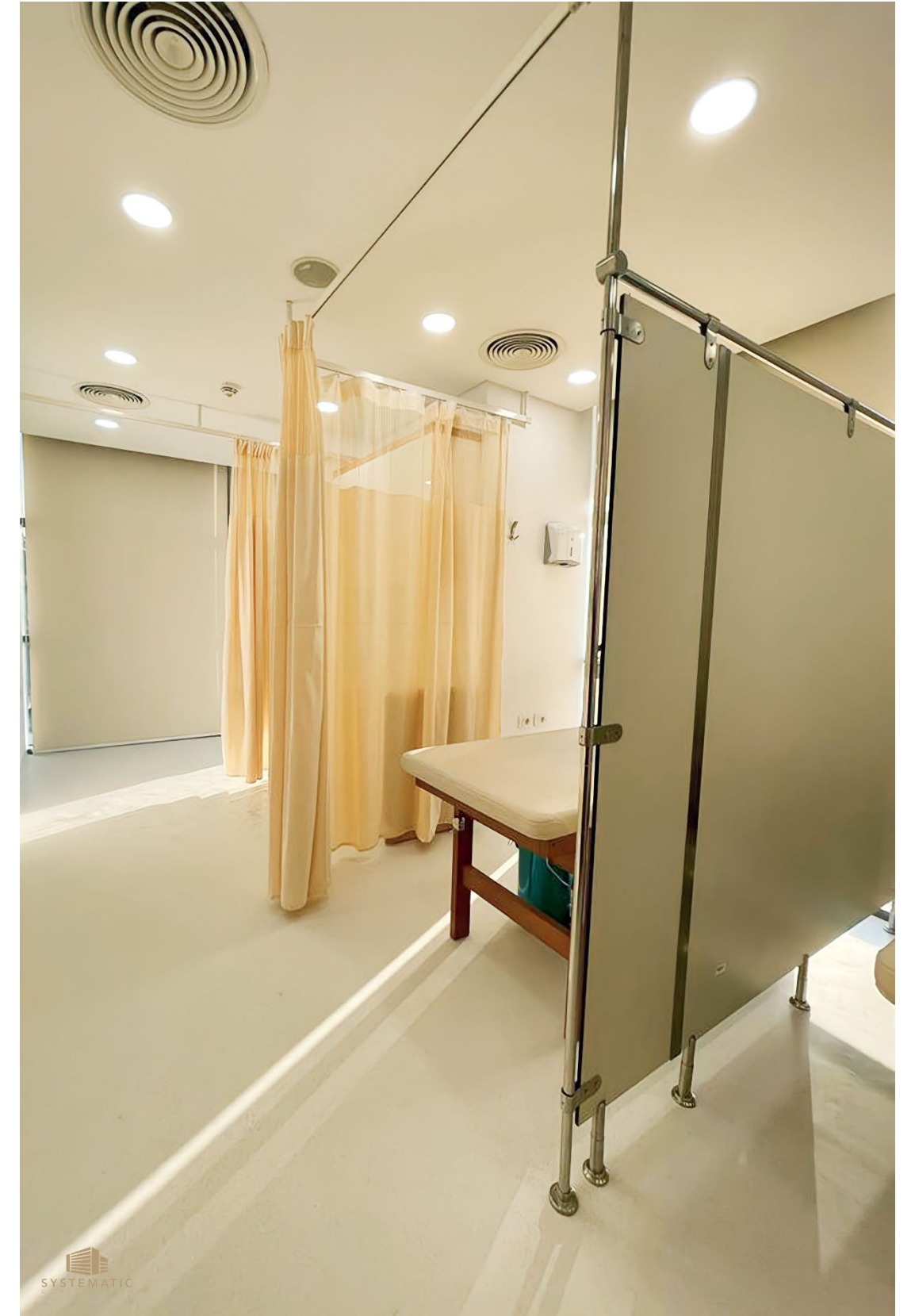






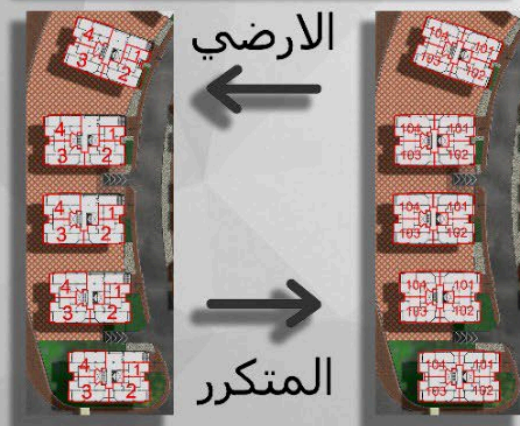
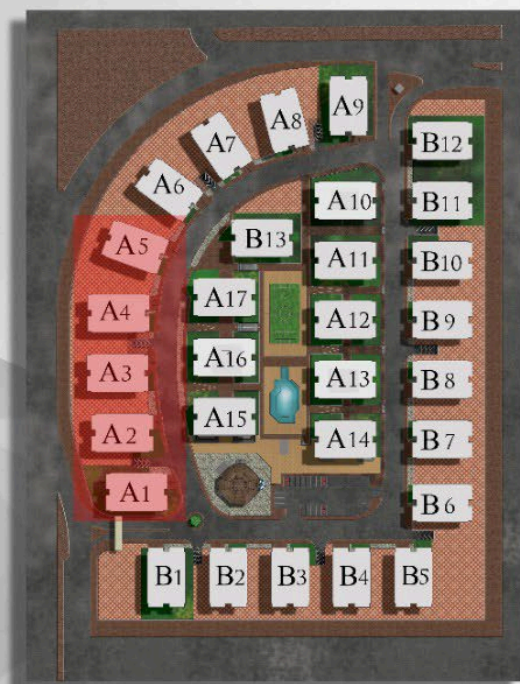
- Project Name: O1 Physiotherapy Renovation
- Location: Fifth Settlement
- Objectives: The O1 Physiotherapy Renovation project in the Fifth Settlement focuses on creating state-of-the-art physiotherapy clinics. Covering an area of 120 sqm, the project includes dedicated physio clinics, exercise areas, and a welcoming reception desk. Our objective is to provide a modern and effective space for physiotherapy services.
- Quality Assurance: Our commitment to quality extends from the concept to the execution of O1 Physiotherapy Renovation. We prioritize excellence in the construction and fit-out process to ensure that the facility aligns with our high standards for healthcare.

O1 Physiotherapy Renovation



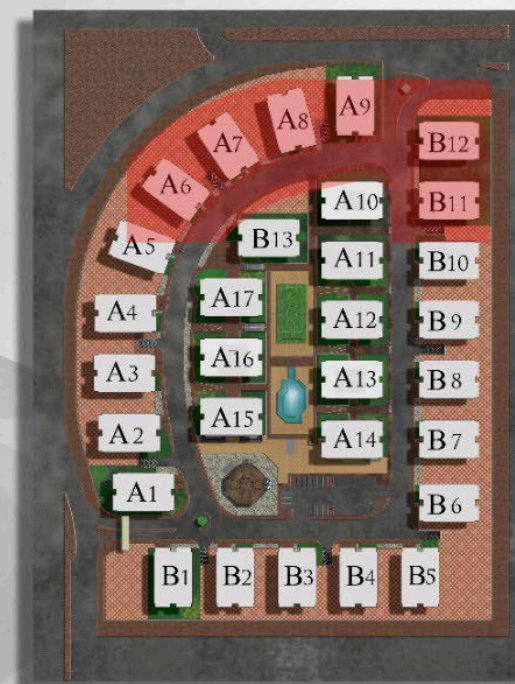


- Project Name: Safwet elAndalus
- Location: Fifth Settlement
- Objectives: Safwet elandalus is an expansive residential compound spanning 58,000 sqm in the heart of the Fifth Settlement. Our primary objective is to create a thriving community offering modern living spaces with a range of amenities.
- 700 Apartments: Thoughtfully designed living spaces to cater to diverse housing needs.
- Basement Garage: Convenient and secure parking facilities for residents.
- Landscape and Gardens: Serene outdoor spaces designed for relaxation and community interaction.
- Mall: A vibrant shopping destination within the compound for residents' convenience.
- Service Area: Facilities and services to enhance the quality of life for Safwet elandalus residents



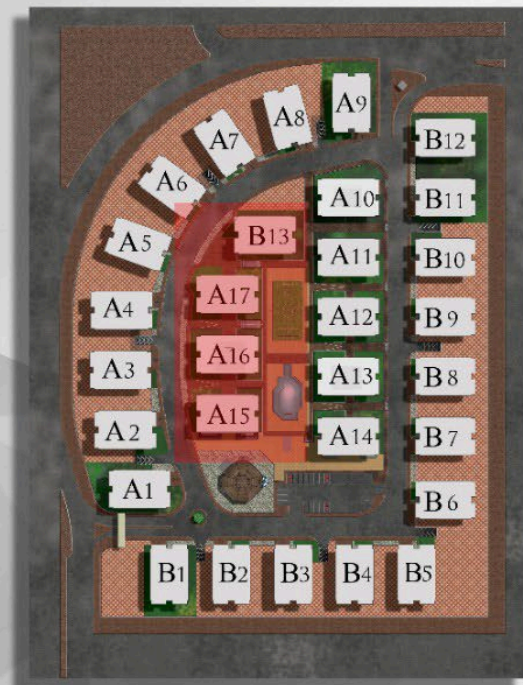
A1-A5

A1	A2	A3	A4	A5
الدور الارضى A1-1 A1-2 A1-3 A1-4	الدور الارضى A2-1 A2-2 A2-3 A2-4	الدور الارضى A3-1 A3-2 A3-3 A3-4	الدور الارضى A4-1 A4-2 A4-3 A4-4	الدور الارضى A5-1 A5-2 A5-3 A5-4
الدور الاول A1-101 A1-102 A1-103 A1-104	الدور الاول A2-101 A2-102 A2-103 A2-104	الدور الاول A3-101 A3-102 A3-103 A3-104	الدور الاول A4-101 A4-102 A4-103 A4-104	الدور الاول A5-101 A5-102 A5-103 A5-104
الدور الثاني A1-201 A1-202 A1-203 A1-204	الدور الثاني A2-201 A2-202 A2-203 A2-204	الدور الثاني A3-201 A3-202 A3-203 A3-204	الدور الثاني A4-201 A4-202 A4-203 A4-204	الدور الثاني A5-201 A5-202 A5-203 A5-204
الدور الثالث A1-301 A1-302 A1-303 A1-304	الدور الثالث A2-301 A2-302 A2-303 A2-304	الدور الثالث A3-301 A3-302 A3-303 A3-304	الدور الثالث A4-301 A4-302 A4-303 A4-304	الدور الثالث A5-301 A5-302 A5-303 A5-304
الدور الرابع A1-401 A1-402 A1-403 A1-404	الدور الرابع A2-401 A2-402 A2-403 A2-404	الدور الرابع A3-401 A3-402 A3-403 A3-404	الدور الرابع A4-401 A4-402 A4-403 A4-404	الدور الرابع A5-401 A5-402 A5-403 A5-404
الدور الخامس A1-501 A1-502 A1-503 A1-504	الدور الخامس A2-501 A2-502 A2-503 A2-504	الدور الخامس A3-501 A3-502 A3-503 A3-504	الدور الخامس A4-501 A4-502 A4-503 A4-504	الدور الخامس A5-501 A5-502 A5-503 A5-504



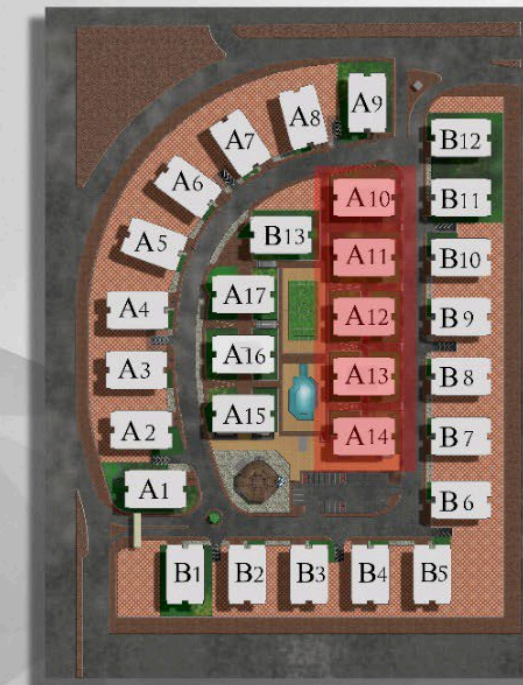
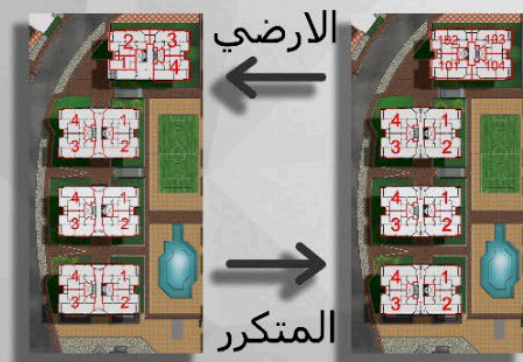
A6-A9 , B11-B12

A6	A7	A8	A9	B11	B12
الدور الارضى A6-1 A6-2 A6-3 A6-4	الدور الارضى A7-1 A7-2 A7-3 A7-4	الدور الارضى A8-1 A8-2 A8-3 A8-4	الدور الارضى A9-1 A9-2 A9-3 A9-4	الدور الارضى B11-1 B11-2 B11-3 B11-4	الدور الارضى B12-1 B12-2 B12-3 B12-4
الدور الاول A6-101 A6-102 A6-103 A6-104	الدور الاول A7-101 A7-102 A7-103 A7-104	الدور الاول A8-101 A8-102 A8-103 A8-104	الدور الاول A9-101 A9-102 A9-103 A9-104	الدور الاول B11-101 B11-102 B11-103 B11-104	الدور الاول B12-101 B12-102 B12-103 B12-104
الدور الثاني A6-201 A6-202 A6-203 A6-204	الدور الثاني A7-201 A7-202 A7-203 A7-204	الدور الثاني A8-201 A8-202 A8-203 A8-204	الدور الثاني A9-201 A9-202 A9-203 A9-204	الدور الثاني B11-201 B11-202 B11-203 B11-204	الدور الثاني B12-201 B12-202 B12-203 B12-204
الدور الثالث A6-301 A6-302 A6-303 A6-304	الدور الثالث A7-301 A7-302 A7-303 A7-304	الدور الثالث A8-301 A8-302 A8-303 A8-304	الدور الثالث A9-301 A9-302 A9-303 A9-304	الدور الثالث B11-301 B11-302 B11-303 B11-304	الدور الثالث B12-301 B12-302 B12-303 B12-304
الدور الرابع A6-401 A6-402 A6-403 A6-404	الدور الرابع A7-401 A7-402 A7-403 A7-404	الدور الرابع A8-401 A8-402 A8-403 A8-404	الدور الرابع A9-401 A9-402 A9-403 A9-404	الدور الرابع B11-401 B11-402 B11-403 B11-404	الدور الرابع B12-401 B12-402 B12-403 B12-404
الدور الخامس A6-501 A6-502 A6-503 A6-504	الدور الخامس A7-501 A7-502 A7-503 A7-504	الدور الخامس A8-501 A8-502 A8-503 A8-504	الدور الخامس A9-501 A9-502 A9-503 A9-504	الدور الخامس B11-501 B11-502 B11-503 B11-504	الدور الخامس B12-501 B12-502 B12-503 B12-504



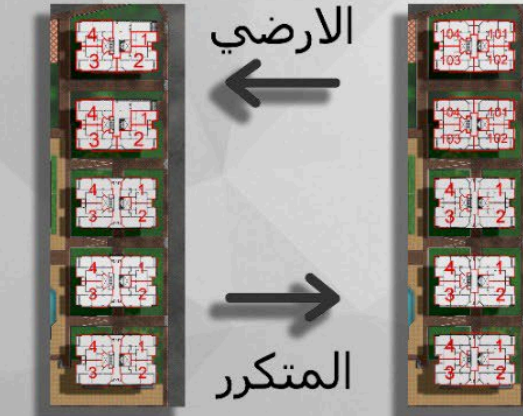
A15-A17 , B13

A15	A16	A17	B13
الدور الأرضي A15-1 A15-2 A15-3 A15-4	الدور الأرضي A16-1 A16-2 A16-3 A16-4	الدور الأرضي A17-1 A17-2 A17-3 A17-4	الدور الأرضي B13-1 B13-2 B13-3 B13-4
الدور الأول A15-101 A15-102 A15-103 A15-104	الدور الأول A16-101 A16-102 A16-103 A16-104	الدور الأول A17-101 A17-102 A17-103 A17-104	الدور الأول B13-101 B13-102 B13-103 B13-104
الدور الثاني A15-201 A15-202 A15-203 A15-204	الدور الثاني A16-201 A16-202 A16-203 A16-204	الدور الثاني A17-201 A17-202 A17-203 A17-204	الدور الثاني B13-201 B13-202 B13-203 B13-204
الدور الثالث A15-301 A15-302 A15-303 A15-304	الدور الثالث A16-301 A16-302 A16-303 A16-304	الدور الثالث A17-301 A17-302 A17-303 A17-304	الدور الثالث B13-301 B13-302 B13-303 B13-304
الدور الرابع A15-401 A15-402 A15-403 A15-404	الدور الرابع A16-401 A16-402 A16-403 A16-404	الدور الرابع A17-401 A17-402 A17-403 A17-404	الدور الرابع B13-401 B13-402 B13-403 B13-404
الدور الخامس A15-501 A15-502 A15-503 A15-504	الدور الخامس A16-501 A16-502 A16-503 A16-504	الدور الخامس A17-501 A17-502 A17-503 A17-504	الدور الخامس B13-501 B13-502 B13-503 B13-504



A10-A14

A10	A11	A12	A13	A14
الدور الأرضي A10-1 A10-2 A10-3 A10-4	الدور الأرضي A11-1 A11-2 A11-3 A11-4	الدور الأرضي A12-1 A12-2 A12-3 A12-4	الدور الأرضي A13-1 A13-2 A13-3 A13-4	الدور الأرضي A14-1 A14-2 A14-3 A14-4
الدور الأول A10-101 A10-102 A10-103 A10-104	الدور الأول A11-101 A11-102 A11-103 A11-104	الدور الأول A12-101 A12-102 A12-103 A12-104	الدور الأول A13-101 A13-102 A13-103 A13-104	الدور الأول A14-101 A14-102 A14-103 A14-104
الدور الثاني A10-201 A10-202 A10-203 A10-204	الدور الثاني A11-201 A11-202 A11-203 A11-204	الدور الثاني A12-201 A12-202 A12-203 A12-204	الدور الثاني A13-201 A13-202 A13-203 A13-204	الدور الثاني A14-201 A14-202 A14-203 A14-204
الدور الثالث A10-301 A10-302 A10-303 A10-304	الدور الثالث A11-301 A11-302 A11-303 A11-304	الدور الثالث A12-301 A12-302 A12-303 A12-304	الدور الثالث A13-301 A13-302 A13-303 A13-304	الدور الثالث A14-301 A14-302 A14-303 A14-304
الدور الرابع A10-401 A10-402 A10-403 A10-404	الدور الرابع A11-401 A11-402 A11-403 A11-404	الدور الرابع A12-401 A12-402 A12-403 A12-404	الدور الرابع A13-401 A13-402 A13-403 A13-404	الدور الرابع A14-401 A14-402 A14-403 A14-404
الدور الخامس A10-501 A10-502 A10-503 A10-504	الدور الخامس A11-501 A11-502 A11-503 A11-504	الدور الخامس A12-501 A12-502 A12-503 A12-504	الدور الخامس A13-501 A13-502 A13-503 A13-504	الدور الخامس A14-501 A14-502 A14-503 A14-504



700 Housing units



700 Housing units



700 Housing units



700 Housing units



700 Housing units





- Project Name: State Cases Advisors Club
- Location: Port Said
- Objectives: State Cases Advisors Club in Port Said is a dedicated sports club, covering an area of 1100 sqm. Our primary objective is to provide a recreational space for State Cases Advisors to engage in sports and promote a healthy lifestyle.
- Quality Assurance: State Cases Advisors Club is a testament to our dedication to creating a space that not only fulfills the objectives of a sports club but also exceeds expectations in terms of safety, design, and overall member satisfaction.

CLUB


SYSTEMATIC
CONSTRUCTION



PROJECTS IN HAND



- Project Name: Family Mall
- Location: Fifth Settlement
- Objectives: The Family Mall project in the Fifth Settlement is designed to be an expansive entertainment center spanning an area of 25,200 sqm. With 6 levels, each floor covering approximately 4,200 sqm, the mall offers a diverse range of facilities. The basement includes a car garage, while the other 4 floors house shops, entertainment areas for kids, seating areas, restaurants, bathrooms, and service areas. The roof floor level completes the offering.
- Quality Assurance: We adhere to strict construction standards, employ experienced professionals, and use top-tier materials to create a safe, functional, and aesthetically pleasing space. From the structural design to interior layout, every detail is closely monitored to ensure it aligns with our vision of providing a premium entertainment experience for families.

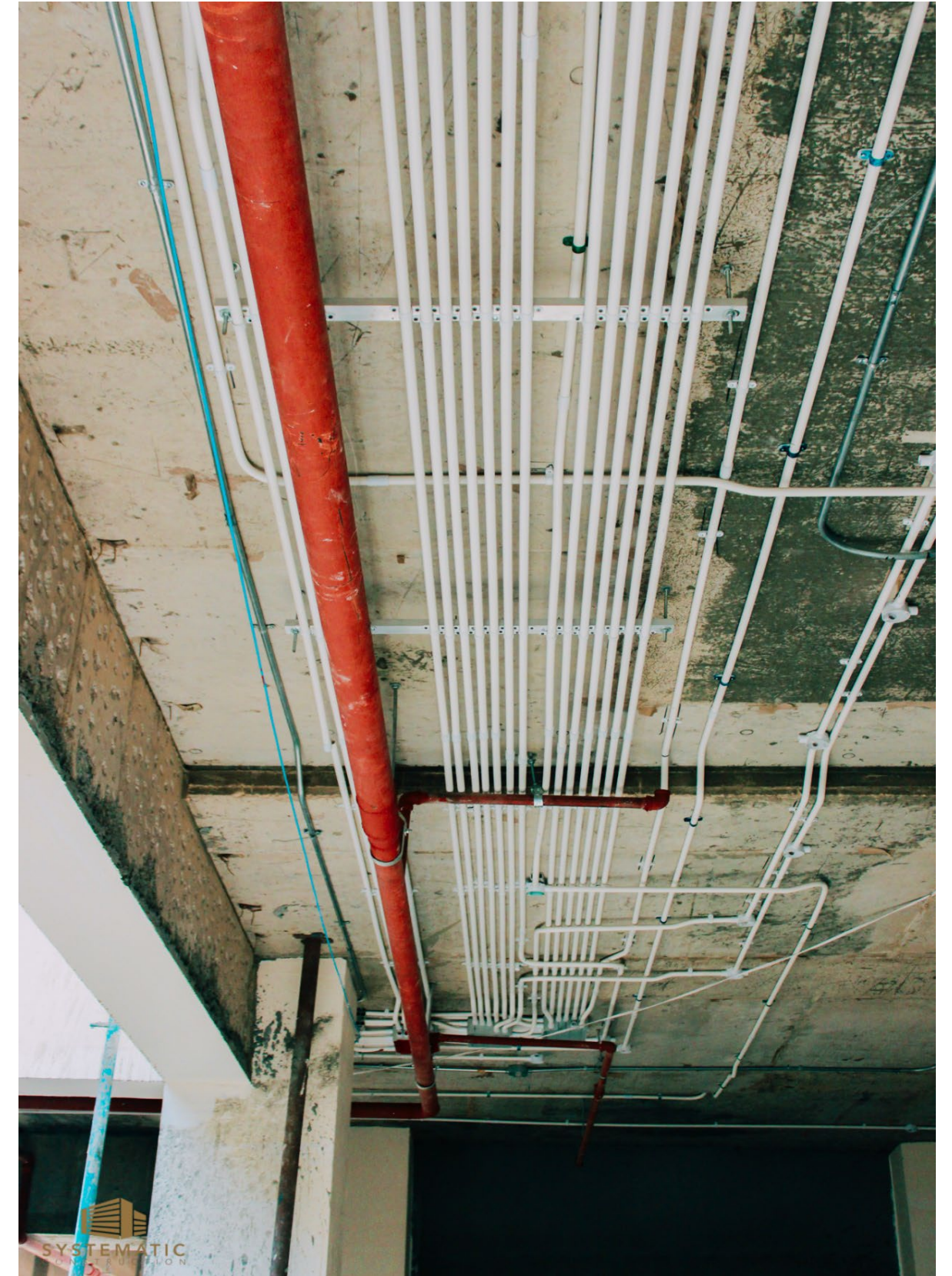
Family Mall



Family Mall







Family Mall





EXPERIENCE...

At Systematic, we take immense pride in our extensive 15 years of experience and unwavering commitment to delivering exceptional construction services. With a decade and a half in the industry, we have honed our skills and gained invaluable insights that set us apart as a leader in the construction sector. Our team of seasoned professionals, including all engineering categories structural engineers, architects, civil engineers, electrical engineers, and more brings a wealth of knowledge and expertise to every project we undertake. We have successfully completed a wide range of construction projects, spanning from residential and commercial developments to large-scale industrial and infrastructure initiatives.



NO	PROJECT	LOCATION
1	Dar Al-Handasah Company	Gazirat elarab
2	Dar Al-Handasah Company	Lebanon Street
3	Bank of Alexandria	Elbahr el aazam
4	Bank of Alexandria	Elmanial
5	Bank of Alexandria	Sheikh zayed
6	Bank of Alexandria	Masr Al Gdeda
7	Bloom Securities Brokerage Company	Gazirat elarab
8	Arup Insurance Company	Gazirat elarab
9	Bloom Bank United Bank	Alexandria
10	United Bank	Belqas
11	Egyptian Gulf Bank	ELdokki
12	National Bank of Egypt Building	Smart village
13	National Bank Building - main center	Fayoum
14	United Bank	Alazarita
15	EL -Nasr Factory for Mako Transformers	Badr city
16	Hanimex	ARAB MALL
17	National Bank of Egypt	Masr Al Gdeda
18	National Bank of Egypt	masr and sudan
19	CIB Bank	Musky
20	Bin Laden Company administrative center	Mohandsen
21	Al-Ghalban Cars Showroom	Merghany

NO	PROJECT	LOCATION
22	Al-Ghalban Cars Showroom	Gzer Al Swiz
23	The covered hall is the S hooting Club	6-Oct
24	El- Ahly football club	Sheikh zayed
25	Maamoura buildings	6-Oct
26	Medical device stores B M EGYPT	Al Obur
27	Abu Dhabi Islamic Bank	Shams club
28	EGYPT WELL CARE	Fifth Settlement
29	Al-Safa Hospital	Mohndsen
30	Arab international Bank	Maadi
31	Arab international Bank	Sharm el-shaikh
32	Arab International Bank	Sheikh Zayed
33	Arab International Bank	Mohamed Farid
34	Export Development Bank	Aswan
35	Arab Land Bank	Downtown
36	Arab Land Bank	Sohag
37	Abu Dhabi Islamic Bank	Fifth Settlement
38	Al-shrouk Hospital	EL-Mohndsen
39	Industrial Development Bank	Elqsr al einy
40	Industrial Development Bank	Salah Salem
41	Miser Iran Bank	ELdokki
42	Cairo Bank	Smouha

NO	PROJECT	LOCATION
43	Industrial Development Bank	Makram Ebeid
44	Industrial Development Bank	ELhijaz
45	Egypt Bank	zefta
46	Investment Bank	Downtown
47	Investment Bank	Ismailia
48	Military Entity	The Administrative Capital
49	Uber	Fifth Settlement
50	Arabian African Bank	Elqsr al einy
51	Suez Canal Bank	Elqsr al einy
52	Japanese University	Burj Al Arab
53	SMSA Express	Salah Salem
54	Nile School	Bulaq
55	Toll station	Port Said
56	Vodafone	Port Said
57	Mansour Chevrolet	pyramid
58	Miser Iran Bank	Dokki
59	Cairo Bank	Smouha
60	National Union Bank	League of Arab States
61	CIB Bank	Damietta
62	CIB Bank	Suez

الرقم	المشروع	الموقع
1	المباني الاداريه لشركة دار الهندسة	جزيرة العرب
2	المباني الاداريه لشركة دار الهندسة	شارع لبنان
3	بنك اسكندرية	البحر الاعظم
4	بنك اسكندرية	المنيل
5	بنك اسكندرية	الشيخ زايد
6	بنك اسكندرية	مصر الجديدة
7	شركة بلوم لتداول الاوراق المالية	جزيرة العرب
8	شركة اروب للتأمين	جزيرة العرب
9	بنك بلوم	الاسكندرية
10	المصرف المتحد	بلقاس
11	البنك المصري الخليجي	الدقي
12	مبنى البنك - CALL CENTER - الاهلي المصري	القرية الذكية
13	مبنى البنك الاهلي- مركز الرئيسي	الفيوم
14	المصرف المتحد	الازرطة
15	مصنع النصر لمحولات الماكو - ٤٠ فدان	مدينة بدر
16	هانيميكس	مول العرب
17	البنك الاهلي المصري	مصر الجديدة
18	البنك الاهلي المصري	مصر والسودان
19	بنك CIB	الموسكي
20	مركز اداري شركة بن لادن	المهندسين
21	معرض سيارات الغلبان	الميرغني

الرقم	المشروع	الموقع
22	معرض سيارات الغلبان	جسر السويس
23	الصاله المغطاه نادي الصيد	٦ اكتوبر
24	النادي الاهلي	الشيخ زايد
25	مباني المعموره	٦ اكتوبر
26	مخازن أجهزه طبية B M EGYPY	العبور
27	مصرف ابو ظبي الاسلامي	نادي الشمس
28	EGYPT WELL CARE	التجمع الخامس
29	مستشفى الصفا	المهندسين
30	المصرف العربي الدولي	المعادي
31	المصرف العربي الدولي	شرم الشيخ
32	المصرف العربي الدولي	الشيخ زايد
33	المصرف العربي الدولي	محمد فريد
34	بنك تنمية الصادرات	أسوان
35	البنك العقاري العربي	وسط البلد
36	البنك العقاري العربي	سوهاج
37	مصرف ابو ظبي الاسلامي	التجمع الخامس
38	مستشفى الشروق	المهندسين
39	بنك التنمية الصناعية	القصر العيني
40	بنك التنمية الصناعية	صلاح سالم
41	بنك مصر ايران	الدقي
42	بنك القاهرة	سموحة

الرقم	المشروع	الموقع
43	بنك التنمية الصناعية	مكرم عبيد
44	بنك التنمية الصناعية	الحجاز
45	بنك مصر	زفتي
46	بنك الاستثمار	وسط البلد
47	بنك الاستثمار	الاسماعيلية
48	الكيان العسكري	العاصمة الادارية
49	أوبر	التجمع الخامس
50	البنك العربي الافريقي	القصر العيني
51	بنك قناة السويس	القصر العيني
52	الجامعة اليابانية	برج العرب
53	سمسه اكسبريس	صلاح سالم
54	مدرسة المنيل	بولاق
55	محطة تحصيل الرسوم	بورسعيد
56	فودافون	بورسعيد
57	منصور شيفروليه	الهرم
58	بنك مصر ايران	الدقي
59	بنك القاهرة	سموحة
60	بنك الاتحاد الوطني	جامعة الدول العربية
61	بنك CIB	دمياط
62	بنك CIB	السويس



THANK'S FOR WATCHING